



UNIU-NE Technology CO., LTD

浙江宇力微新能源科技有限公司



LM321 Data Sheet

V 1.1

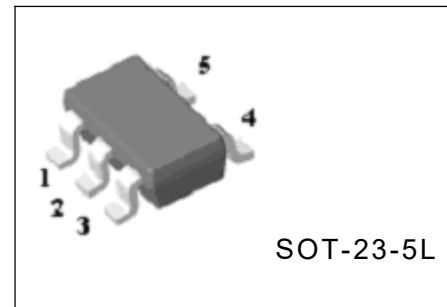
版权归浙江宇力微新能源科技有限公司

Low Power Single Op Amp LM321

DESCRIPTION

The LM321 brings performance and economy to low power systems. With a high unity gain frequency and a guaranteed $0.4\text{V}/\mu\text{s}$ slew rate, the quiescent current is only $430\mu\text{A}/\text{amplifier}$ (5V). The input common mode range includes ground and therefore the device is able to operate in single supply applications as well as in dual supply applications. It is also capable of comfortably driving large capacitive loads.

The LM321 is available in the SOT-23-5L package. Overall the LM321 is a low power, wide supply range performance op amp that can be designed into a wide range of applications at an economical price without sacrificing valuable board space.



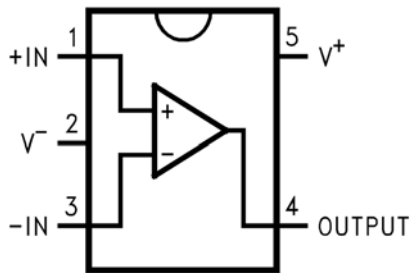
FEATURES

- Gain-Bandwidth product: 1MHz
- Low supply current: $430\mu\text{A}$
- Low input bias current: 45nA
- Wide supply voltage range: +3V to +32V

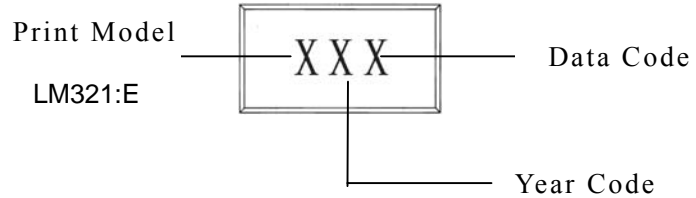
APPLICATIONS

- Chargers
- Power supplies
- Industrial: controls,
- instruments Desktops
- Communications infrastructure

BLOCK DIAGRAM



MARKING INFORMATION



ABSOLUTE MAXIMUM RATINGS (Note 1)

Characteristic	Value	Unit
Supply Voltage, ($V^+ - V^-$)	32	V
Input Voltage	-0.3~+32	V
Output Short Circuit to GND $V^+ \leq 15V$ and $T_a = 25^\circ C$ Note2	Continuous	
Junction Temperature (Note3)	150	$^\circ C$
Thermal Resistance to Ambient (θ_{JA})	265	$^\circ C$
Operating Temperature Range	-40~+85	$^\circ C$
Storage Temperature Range	-65~+150	$^\circ C$

ELECTRICAL CHARACTERISTICS (Unless otherwise specified: $V^+ = 5.0V$)

Parameter	Test Conditions	Min.	Typ.	Max.	Unit
Input Offset Voltage	$T_a = 25^\circ C$ (Note 4)		2	5	mV
Input Bias Current	$T_a = 25^\circ C$, $I_{IN(+)}$ or $I_{IN(-)}$, $V_{CM} = 0V$ (Note 5)		45	150	nA
Input Offset Current	$T_a = 25^\circ C$, $I_{IN(+)} - I_{IN(-)}$, $V_{CM} = 0V$		3	30	nA
Input Common-Mode Voltage Range	$T_a = 25^\circ C$, $V^+ = 30V$ (Note 6)	0		$V^+ - 1.5$	V
Supply Current	Over Full Temperature Range, $R_L = \infty$ on all Op Amps	$V^+ = 30V$	0.66	2	mA
		$V^+ = 5V$	0.43	1.2	
Large Signal Voltage Gain	$V^+ = 15V$, $T_a = 25^\circ C$, $R_L \geq 2k\Omega$ (For $V_o = 1 \sim 11V$)	50	100		V/mV
Common-Mode Rejection Ratio	DC, $T_a = 25^\circ C$, $V_{CM} = 0 \sim V^+ - 1.5V$	70	90		dB
Power Supply Rejection Ratio	DC, $T_a = 25^\circ C$, $V^+ = 5 \sim 30V$	75	100		dB
Amplifier-to-Amplifier Coupling	$T_a = 25^\circ C$, $f = 1 \sim 20kHz$ (Input Referred) (Note 7)		-120		dB

Output Current	Source	$V_{IN(+)}=1V, V_{IN(-)}=0V, V^+=15V, V_o=2V, T_a=25^\circ C$	20	40		mA
	Sink	$V_{IN(-)}=1V, V_{IN(+)}=0V, V^+=15V, V_o=2V, T_a=25^\circ C$	10	20		mA
		$V_{IN(-)}=1V, V_{IN(+)}=0V, V^+=15V, V_o=200mV, T_a=25^\circ C$	12	50		? A
Short Circuit to Ground		$V^+=15V, T_a=25^\circ C$ (Note 2)		40	85	mA
Output Voltage Swing	VOH	$V^+=30V$	RL=2k?	26		V
			RL=10k?	27	28	V
	VOL	$V^+=5V, R_L=10k?$		5	20	mV

Note 1 Absolute Maximum Ratings indicate limits beyond which damage to the device may occur. Operating Ratings indicate conditions for which the device is intended to be functional, but specific performance is not guaranteed. For guaranteed specifications and the test conditions, see the Electrical Characteristics.

Note 2: Short circuits from the output to V^+ can cause excessive heating and eventual destruction. When considering short circuits to ground, the maximum output current is approximately 40mA independent of the magnitude of V^+ . At values of supply voltage in excess of +15V, continuous short-circuits can exceed the power dissipation ratings and cause eventual destruction. Destructive dissipation can result from simultaneous shorts on all amplifiers.

Note 3: The maximum power dissipation is a function of $T_{J(MAX)}$, θ_{JA} , and T_a . The maximum allowable power dissipation at any ambient temperature is $P_D = (T_{J(MAX)} - T_a) / \theta_{JA}$. All numbers apply for packages soldered directly onto a PC board.

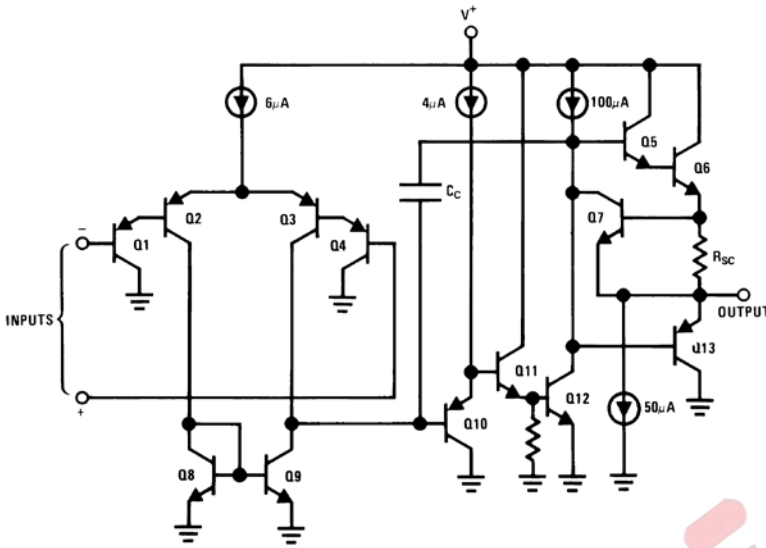
Note 4: $V_o=1.4V, R_s = 0\Omega$ with V^+ from 5V to 30V; and over the full input common-mode range (0V to $V^+ - 1.5V$) at $25^\circ C$

Note 5: The direction of the input current is out of the IC due to the PNP input stage. This current is essentially constant, independent of the state of the output so no loading change exists on the input lines.

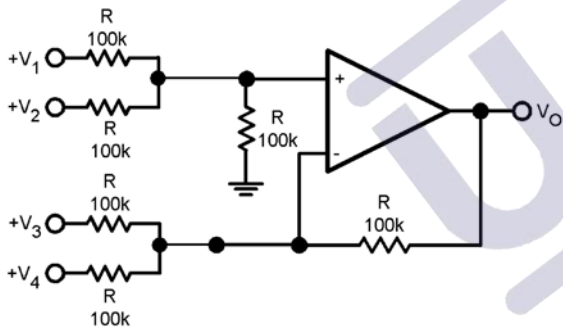
Note 6: The input common-mode voltage of either input signal voltage should not be allowed to go negative by more than 0.3V (at $25^\circ C$). The upper end of them common-mode voltage range is $V^+ - 1.5V$ (at $25^\circ C$), but either or both inputs can go to +32V without damage, independent of the magnitude of V^+ .

Note 7: Due to proximity of external components, insure that coupling is not originating via stray capacitance between these external parts. This typically can be detected as this type of capacitance increases at higher frequencies.

SIMPLIFIED SCHEMATIC



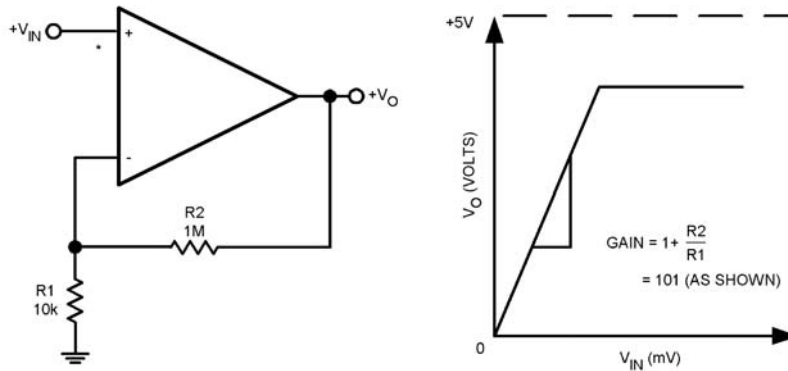
APPLICATION CIRCUIT



DC Summing Amplifier
 $(V_{IN's} \geq 0 \text{ } V_{DC} \text{ and } V_O \geq V_{DC})$

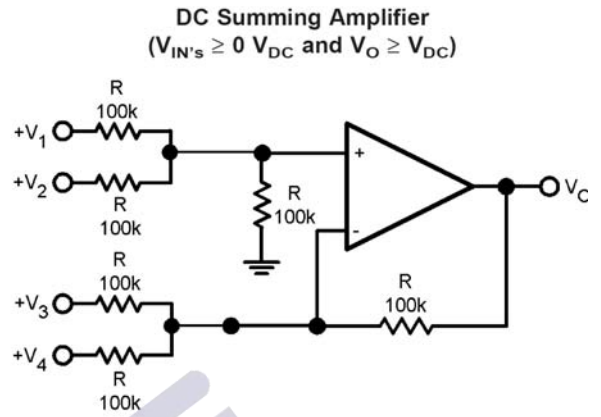
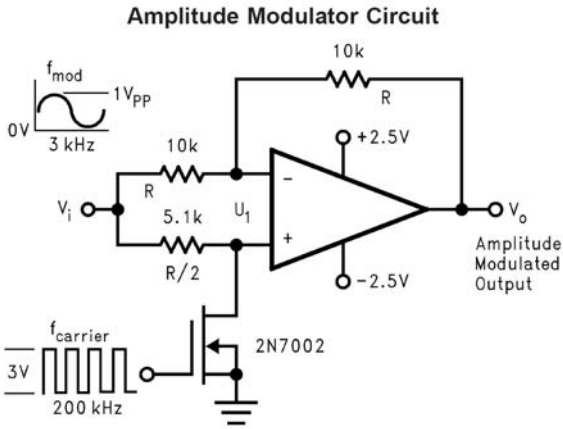
Where: $V_0 = V_1 + V_2 - V_3 - V_4$, $(V_1 + V_2) \geq (V_3 + V_4)$ to keep $V_0 > 0 \text{ } V_{DC}$

Non-Inverting DC Gain (0V Input = 0V Output)

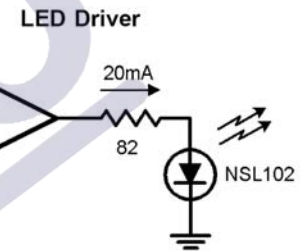
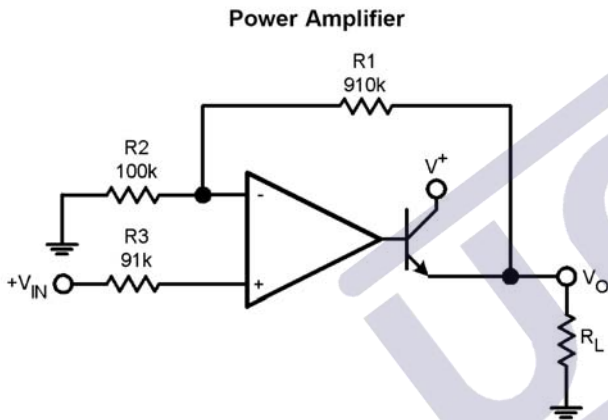


* R NOT NEEDED DUE TO TEMPERATURE INDEPENDENT I_{IN}

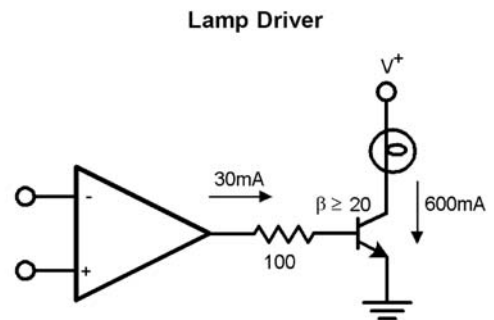
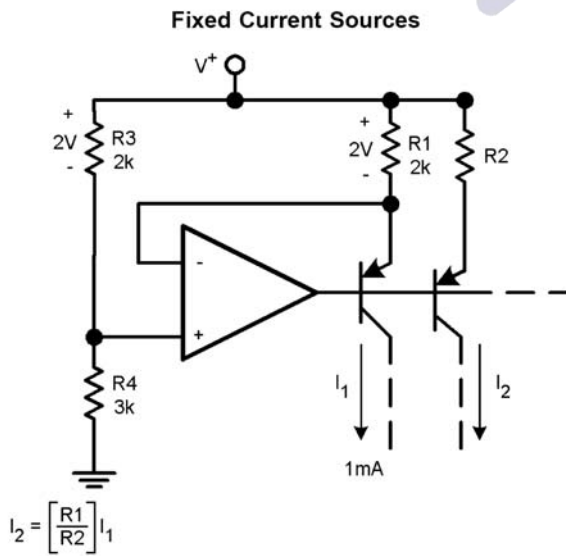
TYPICAL APPLICATIONS



Where: $V_O = V_1 + V_2 - V_3 - V_4$, $(V_1 + V_2) \geq (V_3 + V_4)$ to keep $V_O > 0 V_{DC}$



$V_O = 0 V_{DC}$ for $V_{IN} = 0 V_{DC}$. $A_V = 10$



1.版本记录

DATE	REV.	DESCRIPTION
2018/04/19	1.0	First Release
2021/11/12	1.1	Layout adjustment

2.免责声明

浙江宇力微新能源科技有限公司保留对本文档的更改和解释权力，不另行通知！客户在下单前应获取我司最新版本资料，并验证相关信息是否最新和完整。量产方案需使用方自行验证并自担所有批量风险责任。未经我司授权，该文件不得私自复制和修改。产品不断提升，以追求高品质、稳定性强、可靠性高、环保、节能、高效为目标，我司将竭诚为客户提供性价比高的系统开发方案、技术支持等更优秀的服务。

版权所有 浙江宇力微新能源科技有限公司/绍兴宇力半导体有限公司

3.联系我们

浙江宇力微新能源科技有限公司

总部地址：绍兴市越城区斗门街道袍渎路25号中节能科创园45幢4/5楼 电话：

0575-85087896（研发部）

传真：0575-88125157

E-mail: htw@uni-semic.com

无锡地址：无锡市锡山区先锋中路6号中国电子（无锡）数字芯城1#综合楼503室

电话：0510-85297939

E-mail: zh@uni-semic.com

深圳地址：深圳市宝安区西乡街道南昌社区宝源路泳辉国际商务大厦410

电话：0755-84510976

E-mail: htw@uni-semic.com